

**COVER MORE AT A TOUCH OF A BUTTON**



**COMMERCIAL GRADE SHADING SYSTEM**

Every Summit is custom made and professionally installed to match your individual requirements. In production since 2003, the Summit is the only system on the market that offers projections up to 16'6". Providing unparalleled strength, durability & security, the Summit can provide up to 660 sqft of solar protection. So if you add one to your home, feel confident that you have selected the finest shading system!

**SELF STORING WHEN NOT IN USE**

The beauty of today's Rainier retractable awnings is their self-storing nature. With a simple press of a button or a command on your smart phone, the shading system fully retracts and stops automatically, and (if so equipped) will be self stored under the protective hood.



UNIT IN



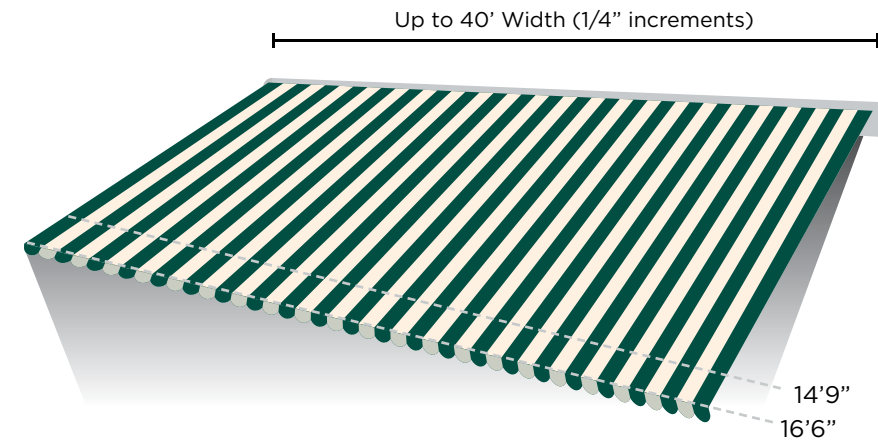
UNIT OUT



INSIDE VIEW

(SHOWN WITH OPTIONAL HOOD)

**PRODUCT FEATURES:**



**SIZES AVAILABLE**

The Summit shading system is custom made to fit your unique space. With widths up to 40' wide and projections from 14'9" up to 16'6", we've got you covered!

*The Summit components meet stringent ISO 9001 and TUV standards and are assembled in the USA by skilled craftspeople.*



Summit Install Bracket

**MOUNTING**

Your Summit unit can be professionally installed 3 ways:

- Wall Mount
- Soffit Mount
- Roof Mount (on top of your roof)



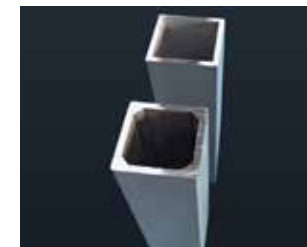
**MOTORIZED**

Easy, touch of a button operation when motorized and includes a manual override feature should you lose power.



**ARM TENSION SYSTEM**

11 cable ART belt system has been tested to 60,000 cycles, providing maximum life for your shading system.



**HEAVY DUTY TORSION BAR**

The Summit comes standard with a heavy duty, 50mm x 50mm, galvanized steel torsion bar that is powder coated to match the framework of the awning. For coastline applications, we offer an optional 8mm thick walled Power coated aluminum torsion bar.

**ARM LIFE EXPECTANCY:**

- ➔ ART — 60,000 Cycles
- CHAIN — 8,000 Cycles
- CABLE — 5,000 Cycles

**STANDARD PRODUCT WARRANTY**



- Lifetime on Framework
- 12 years (non prorated) on the fabric & seams
- 8 years on motor and electronics



Your independently owned and operated dealer

RS6P325



Rainier has been providing quality shading solutions since 1896. For more information please visit:

[RAINIERSHADING.COM](http://RAINIERSHADING.COM)

**RAINIER | SUMMIT**

**RETRACTABLE SHADING SYSTEMS**



UNIQUELY  
DESIGNED

TO MEET  
YOUR NEEDS

PRODUCT  
OPTIONS



**WHEN YOU JUST WANT TO GO BIG**

Every Rainier shading system is custom made and professionally installed by our independent dealers to meet your individual requirements. The Summit is available in widths from 16' to 40' & up to 16'6" in projection. Rainier components meet stringent ISO 9001 and TUV standards and are assembled in the USA by skilled craftspeople.

**ADVANCED BELT TECHNOLOGY**

While other systems have exposed cables or chains, Summit A.R.T. consists of 11 individually wound cables encased in a poly carbon, UV resistant PVC coating. Each belt is individually tested to 3,300 pounds of resistance at 60,000 cycles which guarantees a long, worry-free life for your Summit shading system.

*Exposed cables - Older technology, less durable*



*ART Arm tensioning system provides strength, quality and durability*



**MOTORIZED FOR EASY USE**

Your Summit features a UL listed motor from Somfy, the world leader in home automation. You can operate your shading system with a wireless wall switch, a hand held remote, a smart device...or from all of these! To increase the usefulness & effectiveness of your shading system, plus add a level of protection, Rainier also offers sun sensors and motion sensors.



Open Roller



Roof Mounted



Protective Hood

**MOUNTING & FABRIC PROTECTION**

**CUSTOM MADE FOR YOUR APPLICATION:**

**Open Roller:** Your unit fabric is fully exposed when rolled up. This is standard for Soffit mount applications.

**Protective Hood:** Your fabric is protected from the elements when retracted: Available in wall and roof mount applications.

**Roof Mounted:** When limited wall mounting space is available, roof mounting is your best option and we strongly suggest the addition of the optional protective hood.



**DROP SHADE**

Add even more solar protection while increasing your privacy with the Rainier Drop Shade. This option features a mesh sun screen fabric that extends down from the front bar over the width of the awning. The Drop Shade is self storing and motorized. This option is available for both projections on units up to 22' wide.



**MOOD LIGHTING**

Add a unique element to your evening entertaining with several lighting options. Lunar Lighting (shown) is typically applied to the back of the front bar and offers a soft warm glow light which can be turned on or off with the same multi-channel remote/transmitter as your awning. An LED lighting option is available with light strips applied to the arms of the awning (dealer installed). This UL-listed LED light kit offers 16 levels of light in either warm (3000K) or cool (6000K) lighting and like lunar lighting, can be controlled with the same multi-channel remote/transmitter or multi-channel wireless wall switch.



**ELECTRONIC ACCESSORIES**

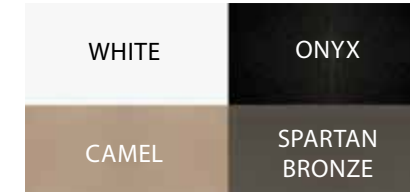
Our world class wireless components make operating your shading system effortless.

- **Wind/Motion Sensor:** This accelerometer sensor attached to the awning's framework will retract the unit if it gets too windy - adding a level of safety and security.
- **Sun Sensor:** This sensor, typically mounted to an exterior wall, will automatically extend the awning once the preset sun level is attained, and will automatically retract your shading system once sun level is below preset settings.
- **TaHoma:** With a TaHoma®, create scenarios to link your connected devices and activate them with just a click on your smartphone!



**POWDER COATED, ALUMINUM PROTECTIVE HOOD**

Protect your fabric from the elements all year long with a protective hood. This option, in matching awning frame hardware color, will also help extend the life of the motor. The protective hood is available up to 40' wide and includes matching side covers for added protection.



**HARDWARE TO MATCH YOUR DÉCOR**

Rainier offers four architecturally pleasing colors to either match or accentuate your home. Our pretreated powder coated finishes are second to none in durability and appearance.



**SUNBRELLA SHADE FABRICS - FROM SERENE TO STUNNING**

Rainier offers a wide array of long lasting, fade resistant, 100% acrylic fabrics from Sunbrella. The Sunbrella Shade fabrics are specifically made for heavy duty applications such as retractable awnings. Each fabric cover is computer cut, has ultrasonically sealed edges, and is sewn with Tena thread to provide a full 10 year warranty on the fabric and the seams. Make a bold statement or blend harmoniously to your home's décor... whatever your choice, we have the fabric for you.

**DIAMOND PROTECTION - ADDED LEVEL OF SECURITY**

Looking for a lifetime warranty on your complete shading system - from frame to fabric, motor and electronics? Ask your dealer for complete details on Diamond Protection Plan!

