

COVER MORE AT A TOUCH OF A BUTTON



COMMERCIAL GRADE SHADING SYSTEM

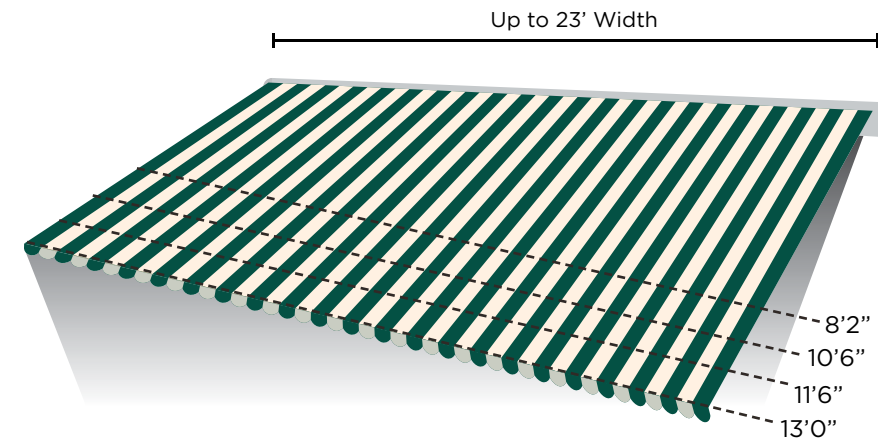
The Regal is our European-inspired shading system. With its sleek design for a clean visual when closed, the Regal offers what today's discerning homeowners are looking for - function & form. From a very compact space, your custom-made, on-demand shading system can span 23' feet wide and project up to 13' when extended.

SELF STORING WHEN NOT IN USE

The beauty of today's Rainier retractable awnings is their self-storing nature. With a simple press of a button or a command on your smartphone, the shading system fully retracts, stops automatically, and self-stores in the semi or full cassette housing.



PRODUCT FEATURES:



SIZES AVAILABLE

The Regal shading system is custom-made to fit your unique space. With widths up to 23' wide and four projections up to 13'0"!

The Regal components meet stringent ISO 9001 and TUV standards and are assembled in the USA by skilled craftspeople.



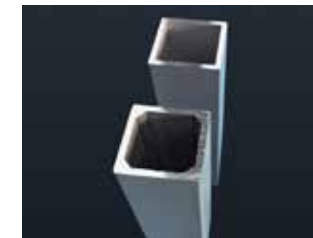
ARM TENSION SYSTEM

The 11 cable ART belt system has been tested to 72,000 cycles to provide maximum life to your shading system.



MOTORIZED

Easy motorized, touch of a button operation. Includes the functionality of a manual override feature should you lose power.



HEAVY DUTY TORSION BAR

The Regal comes standard with a heavy duty, 40mm x 40mm, galvanized steel torsion bar that is powder coated to match the framework of the awning. For coastline applications, we offer an optional 8mm thick walled powder coated aluminum torsion bar.

ARM LIFE EXPECTANCY:

- ➔ **ART** — 60,000 Cycles
- CHAIN** — 8,000 Cycles
- CABLE** — 5,000 Cycles

STANDARD PRODUCT WARRANTY



- Lifetime on Framework
- 12 years (non prorated) on the fabric & seams
- 8 years on motor and electronics



Rainier has been providing quality shading solutions since 1896. For more information please visit:

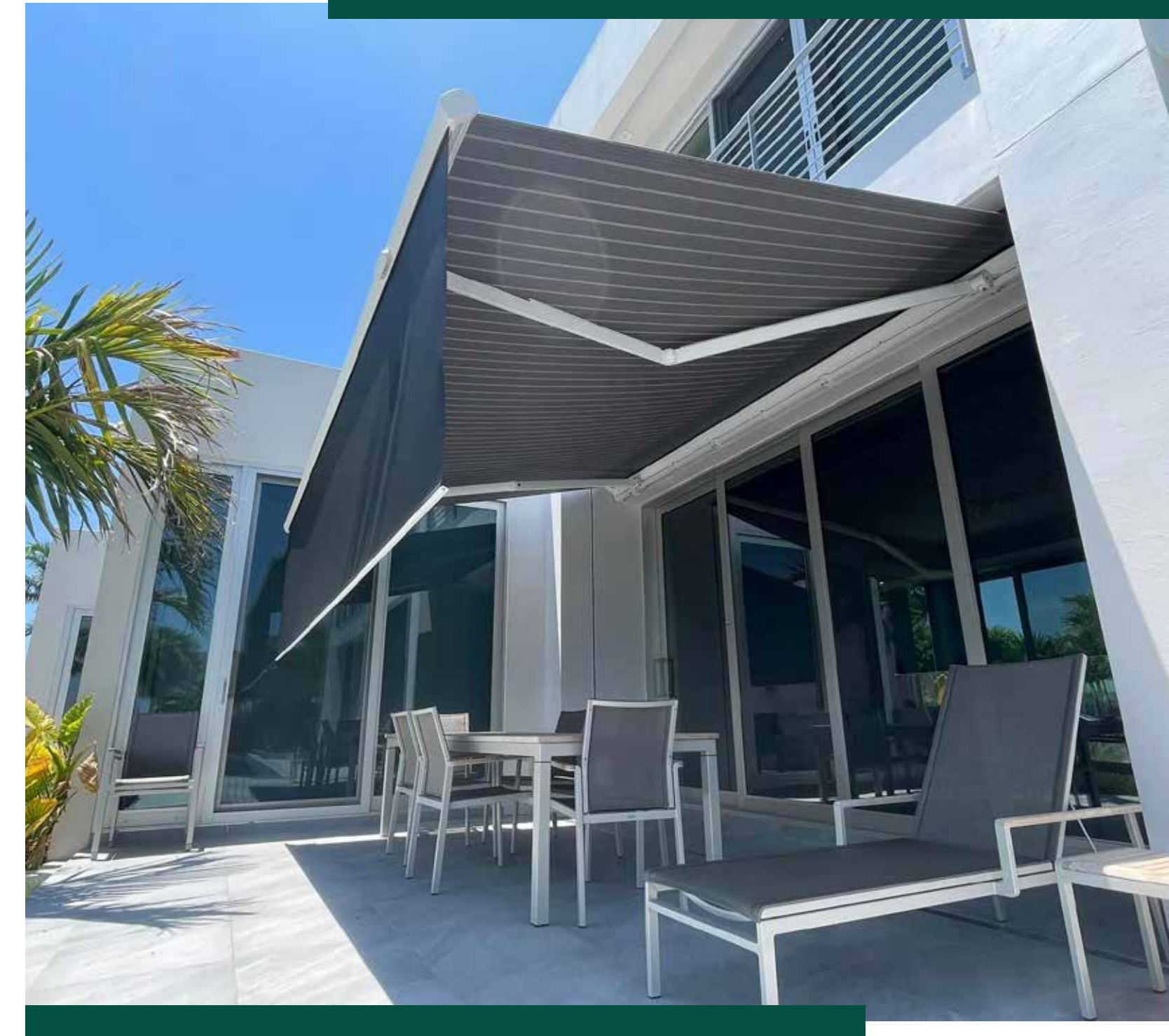
RAINIERSHADING.COM

Your independently owned and operated dealer

RS6P325

RAINIER | REGAL

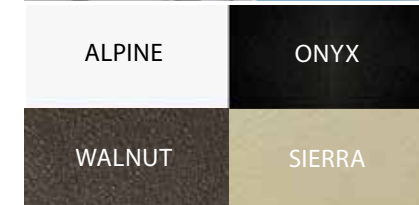
RETRACTABLE SHADING SYSTEMS



UNIQUELY
DESIGNED

TO MEET
YOUR NEEDS

PRODUCT
OPTIONS



BUILT TO LAST, PROFESSIONALLY INSTALLED

Every Rainier shading system is custom-made and professionally installed by our independent dealers to meet your individual requirements. The Regal unit can be ordered up to 23' in width & up to 13'0" in projection. Rainier components meet stringent ISO 9001 and TUV standards and are assembled in the USA by skilled craftspeople.

ADVANCED RIBBON TECHNOLOGY ARMS

While most competitive brands have exposed cables or chains, the Regal A.R.T. arm consists of 11 individually wound cables encased in a polycarbon, UV resistant PVC coating which is hidden inside the arm. The arm also features sealed bearings at the elbow, unique to the industry for smooth operation. The arm's tension system is tested to 3,300 pounds of resistance and the complete arm to 72,000 cycles which guarantees you a long, worry-free life backed by a lifetime warranty to you.

MOTORIZED FOR EASY USE

Your Regal features a UL-listed motor from Somfy, the world leader in home automation. You can operate your shading system with a wireless wall switch, a handheld remote, a smart device...or from all of these! To increase the usefulness & effectiveness of your shading system, plus add a level of protection, Rainier also offers sun sensors and motion sensors.

DROP SHADE

Add even more solar protection while increasing your privacy with the Rainier Drop Shade. This option features a mesh sun screen fabric that extends down from the front bar over the width of the awning. The Drop Shade is self storing and motorized. This option is available in projections up to 11'6".

INTEGRATED LED ARMS

Our new LED Integrated arms on retractable awnings bring an innovative upgrade to outdoor comfort and style. These sleek, energy-efficient LED lights are seamlessly built into the arms of the awning, providing enhanced illumination for your outdoor spaces without the need for additional fixtures. Equipped with 16 levels of adjustable light, this option can take any outdoor space to another level!

ELECTRONIC ACCESSORIES

Our world-class wireless components make operating your shading system effortless.

- **Wind/Motion Sensor:** This accelerometer sensor attached to the awning's framework will retract the unit if it gets too windy – adding a level of safety and security.
- **Sun Sensor:** This sensor, typically mounted to an exterior wall, will automatically extend the awning once the preset sun level is attained, and will automatically retract your shading system once sun level is below preset settings.
- **TaHoma:** With a TaHoma®, create scenarios to link your connected devices and activate them with just a click on your smartphone!

FULL CASSETTE HOUSING

Protect your entire unit from the elements all year long with the added protection of the full cassette option. The full cassette, like the standard semi cassette housing, is all aluminum and powder coated to match the other components of the unit. This option offers a cleaner look when fully retracted and is available up to 23' wide.

HARDWARE TO MATCH YOUR DÉCOR

Rainier offers four architecturally pleasing colors to either match or accentuate your home. Our pretreated powder coated finishes are second to none in durability and appearance.

SUNBRELLA SHADE FABRICS - FROM SERENE TO STUNNING

Rainier offers a wide array of long-lasting, fade-resistant, 100% acrylic fabrics from Sunbrella. The Sunbrella Shade fabrics are specifically made for heavy-duty applications such as retractable awnings. Each fabric cover is computer cut, has ultrasonically sealed edges, and is sewn with Tena thread to provide a full 10-year warranty on the fabric and the seams. Make a bold statement or blend your awning harmoniously to your home's décor... whatever your choice, we have the fabric for you.

DIAMOND PROTECTION - ADDED LEVEL OF SECURITY

Looking for a lifetime warranty on your complete shading system – from frame to fabric, motor and electronics? Ask your dealer for complete details on Diamond Protection Plan!



Exposed cables - Older technology, less durable

ART Arm tensioning system provides strength, quality and durability

