

THE NEXT GENERATION IN SHADING



DELIVERING VALUE

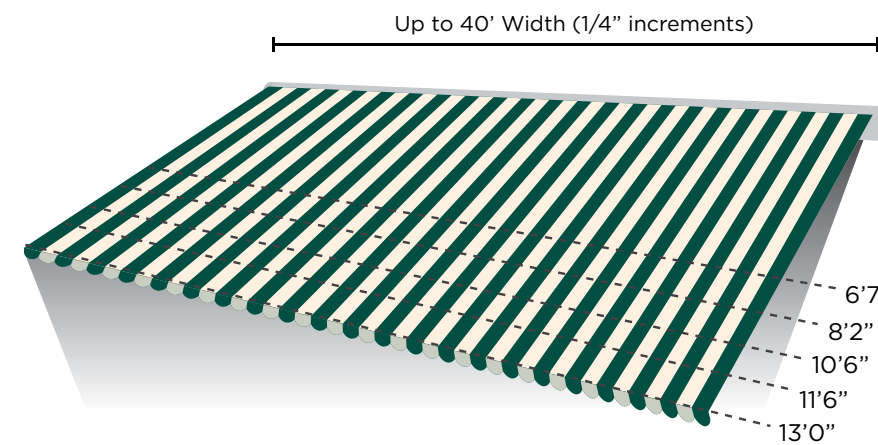
The Olympus is the upgraded "Gold Standard" of our Rainier model and is known to be our most popular unit. The Olympus offers the latest key product enhancements to ensure a long-lasting, trouble-free shading system. The Olympus is confidently backed with our extended Emerald Protection Warranty package included at no additional cost.

ELEGANT PERFORMANCE

The Olympus Shading System features components that provide a refined, finished look while adding strength and durability to the system. The aluminum powder coated torsion bar has been upgraded to a stronger, thicker wall profile to increase unit rigidity. The retractable arms are where you'll notice the greatest improvements. These arms feature larger arm profiles, a concealed heavy-duty arm belt, sealed ball bearings at the elbow and an overall contoured designer shade.



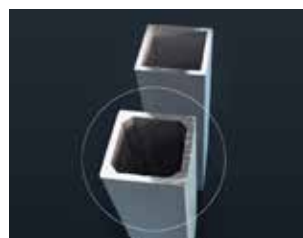
PRODUCT FEATURES:



SIZES AVAILABLE

The Olympus shading system is custom made to fit your unique space. With widths up to 40' wide and projections up to 13', we've got you covered!

The Olympus components meet stringent ISO 9001 and TUV standards and are assembled in the USA by skilled craftspeople.



HEAVY DUTY TORSION BAR

The Olympus torsion bar is 15% heavier than our standard bar. This provides a stable shading system with less bouncing in light winds.



MOTORIZED

Easy touch of a button motorized operation includes a manual override feature should you lose power.



CONCEALED ARM TENSION SYSTEM

The larger, internally hidden belt translates to a cleaner finished look with a tighter fabric cover.



MOUNTING

Wall, soffit, or roof mounting available to match your needs.



OLYMPUS ARMS

Sealed ball bearings & larger profiles providing smooth and quiet operation.

STANDARD PRODUCT WARRANTY



- Lifetime on Framework
- 12 years (non prorated) on the fabric & seams
- 8 years on motor and electronics



Your independently owned and operated dealer

RS6P325



Rainier has been providing quality shading solutions since 1896. For more information please visit:

RAINIERSHADING.COM

RAINIER | OLYMPUS

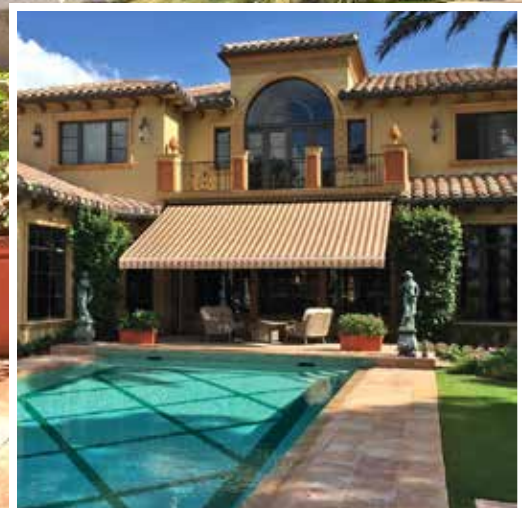
RETRACTABLE SHADING SYSTEMS



UNIQUELY
DESIGNED

TO MEET
YOUR NEEDS

PRODUCT
OPTIONS



CUSTOM BUILT TO YOUR SPECIFICATIONS

Every Rainier shading system is custom made and professionally installed by our independent dealers to meet your individual requirements. The Olympus is available up to 40' wide with projections up to 13'. Rainier components meet stringent ISO 9001 and TUV standards and are assembled in the USA by skilled craftspeople.

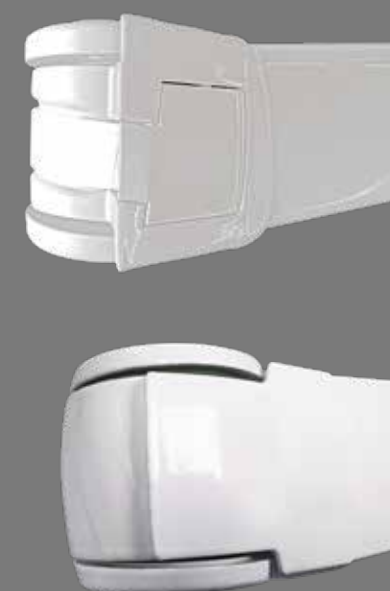
TRULY THE INDUSTRY LEADER

Rainier Olympus Arms:

- The Rainier brand exclusive ART arm belt is hidden for a clean finished look
- 21% more arm tension than our Rainier model provides stronger, tighter fabric
- Tested to 72,000 cycles - 20% more expected life than the Rainier model
- Thicker, contoured arm profiles for reduced arm deflection
- Sealed dual ball bearing elbows with a larger radius curve for smoother operation and better arm tension.

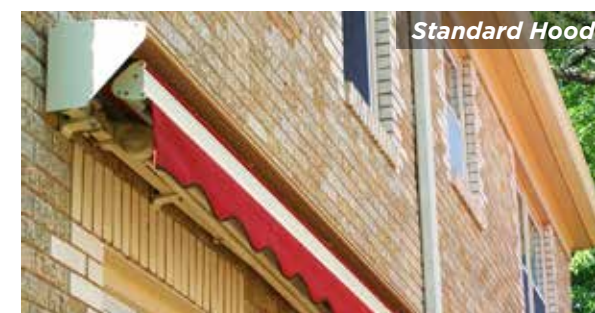
Rainier Arm

Olympus Arm



MOTORIZED FOR EASY USE

Your Olympus features a UL-listed motor from Somfy, the world leader in home automation. You can operate your shading system with a wireless wall switch, a handheld remote, a smart device...or from all of these! To increase the usefulness & effectiveness of your shading system, plus add a level of protection, Rainier also offers sun sensors and motion sensors.



MOUNTING & FABRIC PROTECTION

Your Rainier unit can be ordered:

Open Roller: Your unit fabric is fully exposed when rolled up. Available as soffit or wall mount.

Semi Cassette: Providing full fabric protection for any mounting application. We recommend this option especially for roof mounting.

Standard Hood: When limited wall mounting space is available, Roof mounting is your best option and always opt for the protective hood.



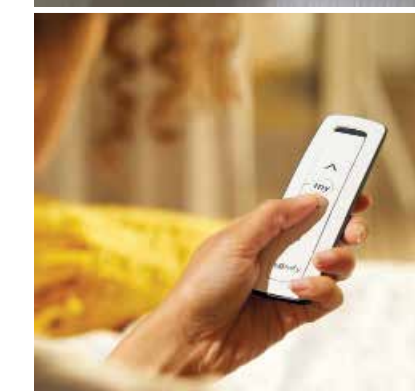
DROP SHADE

Add even more solar protection while increasing your privacy with the Rainier Drop Shade. This option features an open mesh, sun screen fabric that extends down from the front bar over the width of the awning. The Drop Shade is self storing and motorized.



INTEGRATED LED ARMS

Our new LED Integrated arms on retractable awnings bring an innovative upgrade to outdoor comfort and style. These sleek, energy-efficient LED lights are seamlessly built into the arms of the awning, providing enhanced illumination for your outdoor spaces without the need for additional fixtures. Equipped with 16 levels of adjustable light, this option can take any outdoor space to another level!



ELECTRONIC ACCESSORIES

Our world-class wireless components make operating your shading system effortless.

- **Wind/Motion Sensor:** This accelerometer sensor attached to the awning's framework will retract the unit if it gets too windy - adding a level of safety and security.
- **Sun Sensor:** This sensor, typically mounted to an exterior wall, will automatically extend the awning once the preset sun level is attained, and will automatically retract your shading system when the sun passes.
- **TaHoma:** With a TaHoma®, create scenarios to link your connected devices and activate them with just a click on your smartphone!



SEMI CASSETTE HOOD

Completely protect your fabric from the elements and increase your level of security with the Semi Cassette option. Note: 13' projection requires 3'3" minimum pitch/drop.

ONYX	WHITE
SPARTAN BRONZE	CAMEL

HARDWARE TO MATCH YOUR DECOR

Rainier offers four architecturally pleasing colors to either match or accentuate your home. Our pretreated powder coated finishes are second to none in durability and appearance.



SUNBRELLA SHADE FABRICS - FROM SERENE TO STUNNING

Rainier offers a wide array of long-lasting, fade-resistant, 100% acrylic fabrics from Sunbrella. The Sunbrella Shade fabrics are specifically made for heavy-duty applications such as retractable awnings. Each fabric cover is computer cut, has ultrasonically sealed edges, and is sewn with Tena thread to provide a full 10-year warranty on the fabric and the seams. Make a bold statement or blend harmoniously to your home's décor... whatever your choice, we have the fabric for you.

DIAMOND PROTECTION - ADDED LEVEL OF SECURITY

Looking for a lifetime warranty on your complete shading system - from frame to fabric, motor and electronics? Ask your dealer for complete details on Diamond Protection Plan!

