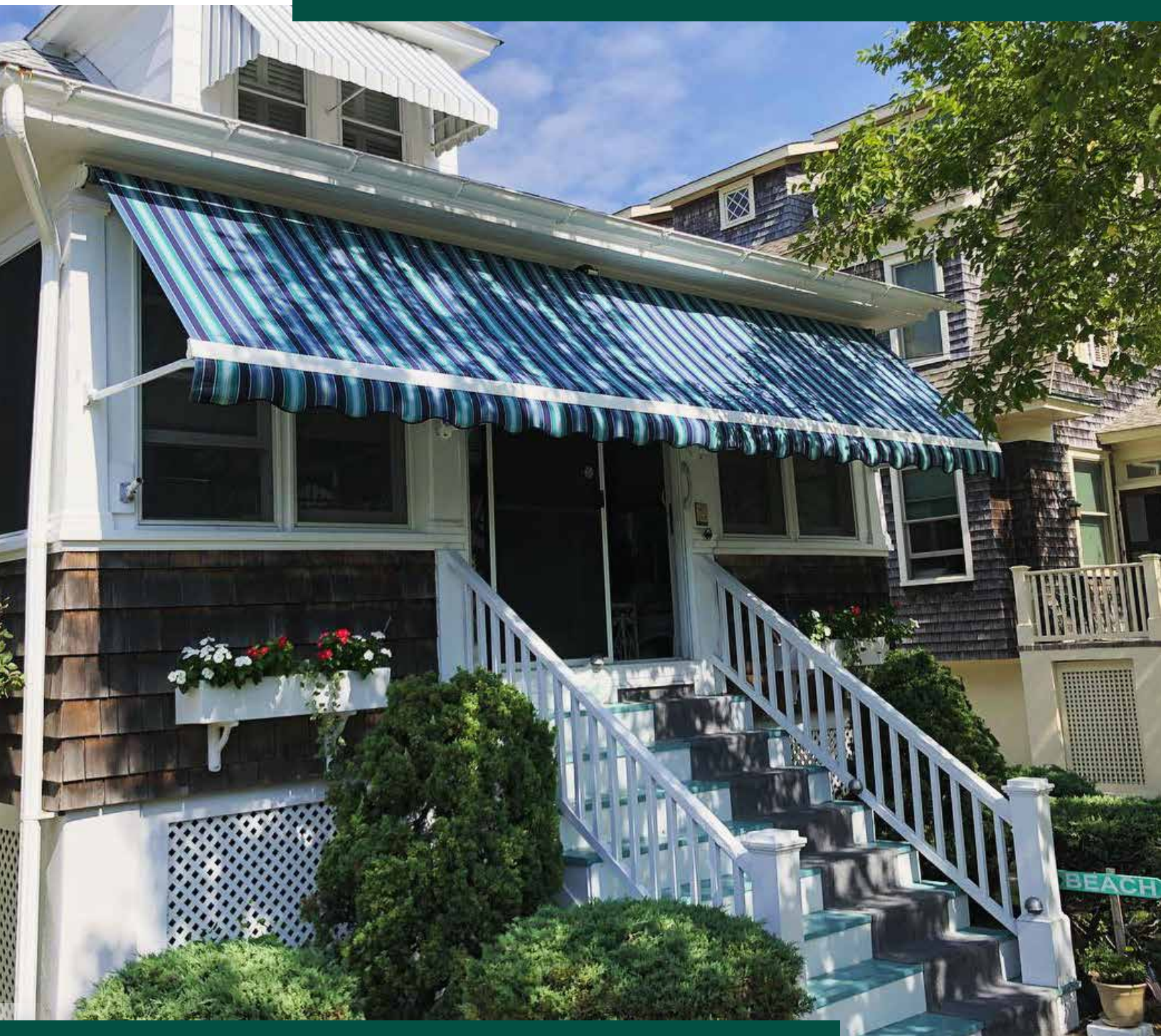


THE SHASTA

RETRACTABLE SHADING SYSTEMS



**UNIQUELY
DESIGNED**

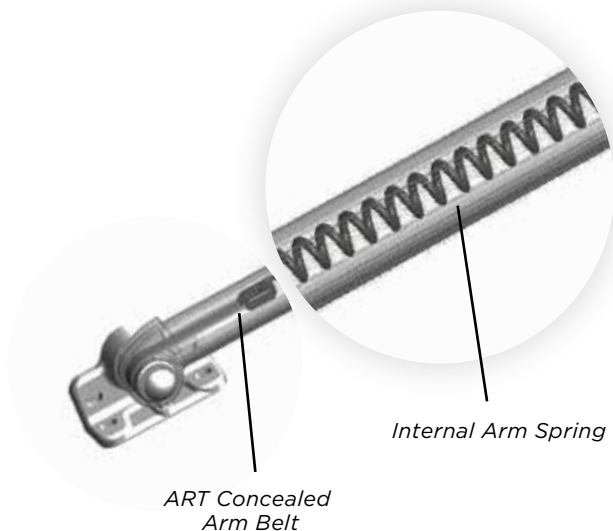


REDUCE COOLING COSTS & FADING - WHILE ADDING COLOR & STYLE

Add the look of old world charm to your home, outdoor structure or store front with Rainier's Shasta awnings. This green solution to your solar problem starts by choosing from over 150 long lasting, 100% acrylic fabrics that will not rot, mildew or fade - guaranteed. By adding The Shasta to your home or business, you add appealing dimension to the structure.

ADVANCED RIBBON TECHNOLOGY

Just like the rest of the Rainier line of shading products, the Shasta incorporates our unique and exclusive ART tension transfer system that utilizes multiple steel cables in a poly carbon, UV resistant coating. Unlike exposed steel cables or chains, your Shasta has been tested to 60,000 cycles far outlasting the competition.



**TO MEET
YOUR NEEDS**

**MOTORIZED FOR EASY, WORRY FREE
PROTECTION & MAXIMUM PERFORMANCE**

To get the most out of your shading system, order it motorized! This will allow you to operate your Shasta or multiple units with a wireless wall switch, a hand held remote, a smart device...or from all of these! You also have the option to add automatic sensors that will adjust your shading system throughout the day.



YOU CONTROL THE SUN ALL YEAR LONG

Because of the retractable nature of the Shasta, you can adjust the product to best suit your shading or privacy needs. You will reduce interior room temperatures up to 20 degrees by stopping the sun's heat before it reaches the glass. For low sun, The Shasta can be adjusted down to provide virtually complete coverage of the window or opening.



PRODUCT OPTIONS



MOTORIZED - MAKE YOUR LIFE EASIER

To provide you with touch of a button operation, we offer UL listed tubular motors. Ask your dealer which motor and electronic accessories will best meet your needs.



POWDER COATED, ALUMINUM PROTECTIVE HOOD

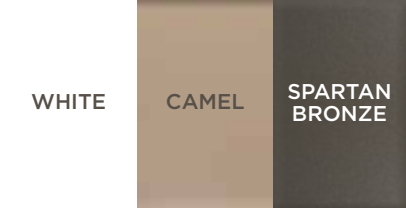
Protect your fabric from the elements all year long with a protective hood. This option, in matching awning frame hardware color, will also help to extend the life of the motor. The protective hood is available up to 30' wide and includes aluminum side covers and stainless steel hardware for added, long term shelter.



ELECTRONIC ACCESSORIES

Our world class wireless components make operating your shading system effortless.

- **Sun Sensor:** This sensor, typically mounted to an exterior wall, will automatically extend the unit (or a series of units) once the preset sun level is attained. It will also automatically retract your shading system when the sun passes or if it rains. This sensor will either extend or retract your shading system based on the weather and your preset positions.
- **TaHoma:** With a TaHoma®, create scenarios to link your connected devices and activate them with just a click on your smartphone!



WHITE

CAMEL

SPARTAN BRONZE

HARDWARE TO MATCH YOUR DECOR

The Shasta is available in three architecturally pleasing colors to match or accentuate your home or business. Our pretreated powder coated finishes are second to none in durability and appearance.



SUNBRELLA SHADE FABRICS - FROM SERENE TO STUNNING

Rainier offers a wide array of long lasting, fade resistant, 100% acrylic fabrics from Sunbrella. The Sunbrella Shade fabrics are specifically made for heavy duty applications such as retractable awnings. Each fabric cover is computer cut, has ultrasonically sealed edges, and is sewn with Tenera thread to provide a full 10 year warranty on the fabric and the seams. Make a bold statement or blend your awning harmoniously to your home's décor... whatever your choice, we have the fabric for you.



DIAMOND & EMERALD PROTECTION - TWO LEVELS OF SECURITY

Looking for an extended warranty on your complete shading system - from frame to fabric, motor and electronics? Then you will love the benefits of our two levels of security. Ask your dealer for complete details on the Diamond and Emerald Protection plans available.

THE NEXT GENERATION IN SHADING



FEEL THAT OLD WORLD

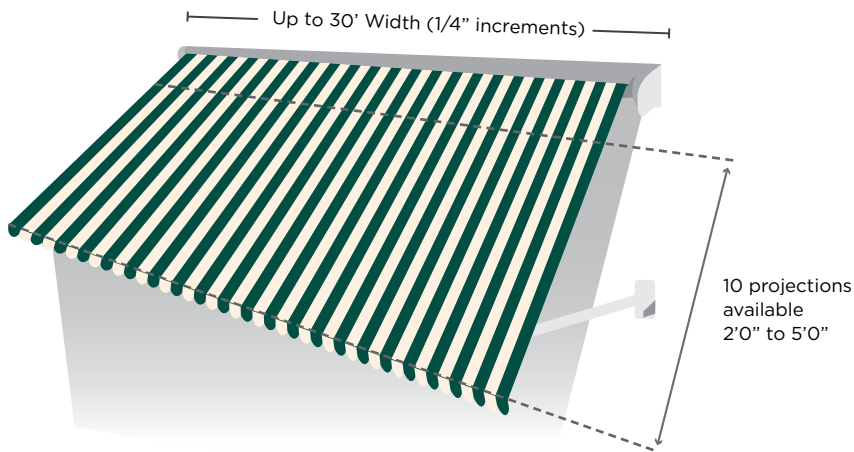
The Rainier Shasta will give you the elegance and the serenity of the past with today's technology. Incorporating the finest, most durable components available, the Shasta will provide years of trouble free solar protection. With three hardware colors to choose from, custom sizing and a full color palette of fabrics, your Rainier shading expert will custom design and install Shasta awnings that you will enjoy every time you see your home.

SELF STORING

With 170 degrees of adjustable inclination, you determine how much of the sun's heat and light you need. When you desire full exposure your Shasta awnings can be fully retracted under their optional protective hood or stored under an overhang, protecting the fabric from the elements.



PRODUCT FEATURES:



SIZES AVAILABLE

Widths: up to 30'0" (1/4" increments)
 Projections/Drops: from 2'0" to 5'0"
 (in 4" increments - 10 sizes available)

The Shasta components meet stringent ISO 9001 and TUV standards and are assembled in the USA by skilled craftspeople.



MOUNTING AND ADJUSTABILITY

Shasta awnings can be wall or ceiling/soffit mounted to provide shade where you need it. The spring loaded arms provide you the option to adjust the unit from fully retracted to full coverage.

STANDARD PRODUCT WARRANTY

- 10 years on the framework
- 10 years on the fabric & seams
- 5 years on motor and electronics

DEGREE OF INCLINATION

Wall Mounting	Ceiling/Soffit Mounting

ADVANCED RIBBON TECHNOLOGY (ART)

The Rainier exclusive, tension transmission system, which incorporates our ART has been tested and proven for almost 2 decades on performance. This design does not stretch or breakdown over time, keeping your fabric taut for years to come.

ARM LIFE EXPECTANCY:

➔	ART	— 60,000 Cycles
	CHAIN	— 8,000 Cycles
	CABLE	— 5,000 Cycles



Your independently owned and operated dealer



Rainier has been providing quality shading solutions since 1896. For more information please visit:

RAINIERSHADING.COM